

Mosquito Focus:

Culex pipiens



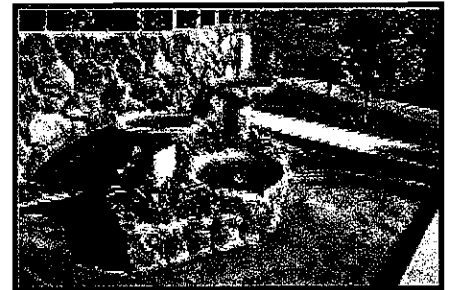
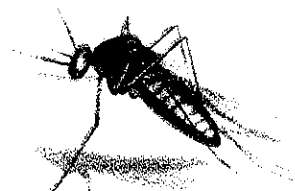
Improve Quality of Life

Culex pipiens, "The Northern House Mosquito", is a small brownish/grey colored mosquito considered to be the primary disease vector of West Nile Virus.

They tend to have numerous generations each summer with several hundred eggs laid at one time. Female mosquitoes drink blood, which provides protein for them to produce eggs. For *Culex pipiens*, the favorite place to get a blood meal is by biting wild birds, but they will also feed on people.

Culex pipiens develops in small containers around the home (buckets, bird baths), in roadside ditches, or in polluted waters like sewage lagoons.

You can do your part in reducing numbers of *Culex pipiens* by following a simple plan: empty water from buckets, cans, pool covers, flower pots and other items and cover stored tires or bring them to our annual scrap tire drive. Also, clean pet water bowls and bird baths weekly, and encourage your neighbors to do the same!



Bay County
Mosquito Control

810 Livingston Avenue
Bay City, MI 48708

Phone: 989-894-4555
Fax: 989-894-0526

www.baycounty-mi.gov/MosquitoControl